

Voltech™

**PM100
PM300**

**POWER
ANALYZERS**



PM100 and PM300 Power Analyzers



Using the proven technology of the world leading Voltech range, these analyzers allow precision bench-top measurements at the price of a portable meter. By connecting directly to the analyzer's 20A-rated, internal shunts, the errors of gain and phase found in external current transformers and transducers are eliminated. For measurements above 20A and 1000V, a broad range of transformers, shunts and

DC-coupled transducers can be accommodated.

Ideal for general-purpose measurements of watts, power factor, harmonics and volts and amps in the design, development and production of electrical and electronic equipment, the PM100 and PM300 are supplied complete with test leads, user manual and certificate of calibration and conformance.

PM100 (Single-Phase) and PM300 (Three-Phase) Analyzers

- 0.1% basic accuracy
- DC to 250kHz bandwidth
- 1000Vpk/20A RMS direct inputs
- Graphics display of waveforms and harmonic bar-charts
- W, V, A, VA, Var, power factor, $\cos\phi$, Vpk, Apk, crest factors and frequency
- Channel 1, 2, 3, SUM() and neutral quantities on the PM300 three-phase analyzer
- Harmonics V, A, (incl. phase) and W to the 50th; total harmonic distortion
- Integrator for W-hr, VA-hr, A-hr, VA-hr, average and target PF
- Easy-to-use menu structure available in different languages
- Accepts and scales for external current and voltage transducers; external shunt inputs for current transducers with voltage output

File Name	Unit
Watts	7.177
Vrms	9.554
Arms	6.308
Vrms	107.58
Arms	88.80 m
PF	0.731
V Peak	152.97
A Peak	217.6 m
V RMS	1.4225
A RMS	2.467
V THD	0.481%
A THD	65.67%
Power	61.00
Imp	1.2115K

Interfaces

(Optional - one fitted at a time)

- IEEE488 for high-speed control and data capture

- RS232 and parallel printer

The RS232 serial port allows complete command and results handling as IEEE488. The parallel printer port may be connected directly to a standard printer with a parallel interface for printing displayed or selected numeric results.

- Chart recorder and alarm interface

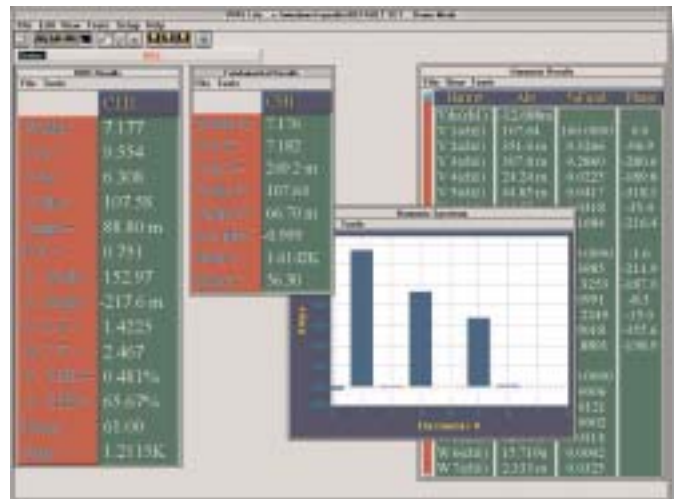
Twelve 0-5V DC outputs track any measurement parameter desired. Two free relay contacts can be programmed to toggle at any selected level for alarm or process control purposes. The twelve chart recorder outputs may also be configured as digital alarms.



Software

- VPASLite Windows software for control and data handling features quick and easy set-up of analysis parameters plus display of numeric data and harmonic bar-charts. Data may be exported to standard Windows text and spreadsheet applications for further presentation and analysis.

Param	U/a	Phase	Phase
V 1idm1	107.64	100.0000	0.0
V 2idm1	371.8 m	0.3286	-86.9
V 3idm1	307.8 m	0.2880	-280.6
V 4idm1	242.4 m	0.0225	-180.0
V 5idm1	44.85 m	0.0017	-318.1
V 6idm1	54.27 m	0.0318	-17.4
V 7idm1	181.31 m	0.1984	-218.4
A 1idm1	1.8996 m		
A 2idm1	66.70 m	100.0000	-1.8
A 2idm1	265.8 m	0.3985	-211.9
A 3idm1	46.24 m	68.3255	-187.0
A 4idm1	95.10 m	0.0991	-8.3
A 5idm1	33.50 m	50.2589	-17.0
A 6idm1	80.13 m	0.3918	-155.6
A 7idm1	15.266 m	18.8801	-198.9
W 1idm1	19.115 m		
W 1idm1	7.17%	100.0000	
W 2idm1	-16.75 a	-0.0006	
W 3idm1	-870.5 a	-0.0121	
W 4idm1	-15.585 a	-0.0002	
W 5idm1	821.0 a	0.0114	
W 6idm1	15.709 m	0.0092	
W 7idm1	2.333 m	0.0325	



Special Modes

- Amps inrush, the peak current at switch-on. Continuous fast sampling captures the peak inrush current. See the Voltech PS1000 Inrush Power Switch data sheet.
- Ballast mode for testing the output of electronic lighting ballasts. Reliable measurements of tube current and power using the Voltech Ballast CT.



Specification

(23°C ± 5°C valid 1 year from calibration)

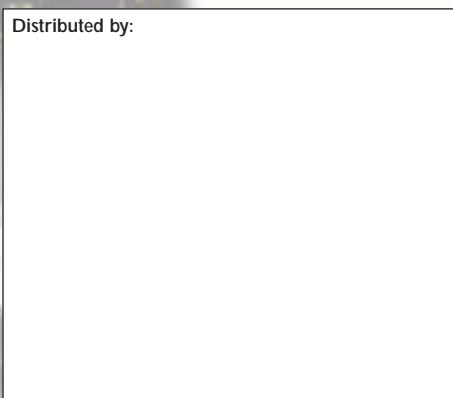
Basic Measurements	V, A, W, VA, Var, PF, Apk, Vpk, Acf, Vcf, frequency
Harmonics	V and A, including phase, plus W – all to the 50th
Integrator	W-h, VA-h, Var-h, A-h, average PF, timer
Inrush	Displays peak current during switch-on
Ballast Mode	For measurements on electronic lighting ballasts, Ballast CT recommended
Voltage Range	2Vrms to 1000Vpk (8 ranges)
Accuracy	±0.1% reading ±0.1% range ±0.1% per kHz ±10mV
Overload Withstand	1400Vpk for 1 sec
Amps Range	20mArms to 20Arms (200Apk)
Accuracy	±0.1% reading ±0.1% range ±0.2% per kHz ±1mA
Overload Withstand	60Arms for 1 sec
W Accuracy	±0.2% reading ±0.2% range ±0.3% per kHz ±5mW
Bandwidth	DC and 5Hz to 250kHz
Safety and EMC	Designed to IEC61010; complies with CE directive
Line Power Input	Dual range 90-120V, 195-265V, 48-65Hz
Interfaces (One fitted at a time)	IEEE488 RS232 I/O and parallel printer Chart recorder and alarms
Dimensions (w x h x l mm)	219 x 123 x 281 Suitable for rack mounting; 3U 1/2 width

While every care has been taken in compiling the information for this publication, Voltech Instruments cannot accept legal liability for any inaccuracies. Voltech Instruments has an intensive program of design and development that may alter product specification. Voltech Instruments reserves the right to alter specification without notice and whenever necessary to ensure optimum performance from its product range.

© Voltech Instruments 1998-2003. All rights reserved.



Distributed by:



Voltech Instruments Inc.
11637 Kelly Road, Suite 306
Fort Myers, FL 33908
USA
Tel: +1 239 437 0494
Fax: +1 239 437 3841
E-mail: sales@voltech.com

Voltech Instruments Ltd.
148 Sixth Street
Harwell International Business Centre
Didcot, Oxon OX11 0RA, UK
Tel: +44 (0)1235 834555
Fax: +44 (0)1235 835016
E-mail: sales@voltech.co.uk



www.voltech.com

Voltech™

THE WORLD'S MOST POPULAR POWER ANALYZERS